

THE 2025

# Recycler

La Crosse County Solid Waste System

[www.lacrossecounty.org/solidwaste](http://www.lacrossecounty.org/solidwaste)



## SERVING

La Crosse County WI,  
Houston County MN, and  
Surrounding Counties

**Please Keep  
For Future  
Reference!**



for more  
information  
scan QR code

**NEW:**

In 2025,  
the minimum  
fee on  
transactions  
has increased  
to \$10



Please note for  
all materials there  
will be a minimum  
of \$1 per ton  
price increase

## Styrofoam Recycling



The Department, in partnership  
with Hilltopper Refuse and  
Recycling, will be accepting  
Polystyrene (Styrofoam) foam for  
recycling. Standard disposal fees  
apply if dropped off at the landfill  
drop-off site.

Free drop off available at Hilltopper  
Refuse & Recycling and 7 Rivers  
Recycling. **Please call  
608-783-6727.**

**For missed pick ups of  
trash or recycling, please  
call your waste hauler  
or municipality.**

## Landfill Hours of Operation:

### Summer Hours:

#### April - Oct.

Monday – Friday:  
6:30 AM – 4:30 PM  
1st and 3rd Saturdays:  
9:00 AM – Noon

### Winter Hours:

#### Nov. - March

Monday – Friday:  
7:00 AM – 4:00 PM

### Office Hours and Reuse Room Hours:

Monday – Friday:  
8:00 AM – 4:00 PM



## Landfill Fees:

 All items have a \$10 minimum fee

### Residential Drop-off Area: \$10 minimum or \$120 per ton

- **Garbage** (normal household waste)
- **Large Items** (furniture, toys, bikes, stoves, grills, washers, dryers)
- **Demolition/Constuction** (wood, drywall, flooring, roofing, doors, windows, etc.)

### Processing Pad: \$10 minimum or a per ton fee

For pricing visit: [www.lacrossecounty.org/solidwaste](http://www.lacrossecounty.org/solidwaste)

### Landfill: \$15 fee and \$65 per ton

### Mattresses: \$13+ weight

### Freon Items: \$10 + weight

(refrigerator, freezer,  
air conditioner, de-humidifier)

### Brush/Clean Wood: \$36/ton

(wood that has not been painted,  
stained, or treated)

**We accept cash, check,  
and credit/debit cards.  
A fee will be added to use  
credit/debit cards:**

- **\$1.95 on \$66.12 or less**
- **2.95% on \$66.13 or more**

**WE ARE NOT AFFILIATED WITH ISLE LA PLUME**

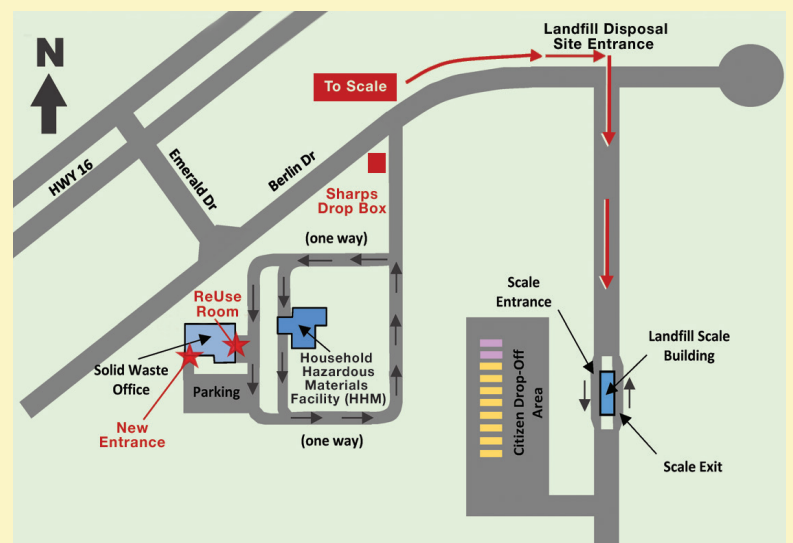
Only people authorized by site attendants may utilize the landfill facility. You must provide your own labor for unloading materials. Due to safety concerns, we do not permit salvaging once waste is placed into containers.

## Information and Directions

### PLEASE READ SIGNAGE

The Landfill's address is 3240 Berlin Drive. The diagram to the right illustrates the entrance to our facility (the landfill is the second right on Berlin Drive). The landfill entrance is equipped with inbound and outbound scales – all landfill customers must scale in and out. Department staff are available at the scale to direct you on disposal options and collection of payment.

For mailing, billing, and other departmental questions our office is located at 3200 Berlin Drive (first right on Berlin Drive) and parking is available on the south side of the building. We can also be reached at (608) 785-9572.



**Landfill Disposal Site: 3240 Berlin Dr. La Crosse, WI 54601**  
**HMM Disposal Site: 3202 Berlin Dr. La Crosse, WI 54601**  
**Office: 3200 Berlin Dr. La Crosse, WI 54601**  
**For questions please call 608-785-9572**

## Municipality Contacts:

### La Crosse County

608-785-9572 [www.lacrossecounty.org](http://www.lacrossecounty.org)

### Houston County

507-725-5800 [www.co.houston.mn.us](http://www.co.houston.mn.us)

### City of La Crosse

608-789-7508 [www.cityoflacrosse.org](http://www.cityoflacrosse.org)

### City of Onalaska

608-781-9500 [www.onalaskawi.gov](http://www.onalaskawi.gov)

### Town of Bangor

608-769-4567 [www.townofbangor.com](http://www.townofbangor.com)

### Village of Bangor

608-486-4084 [www.villageofbangorwi.gov](http://www.villageofbangorwi.gov)

### Town of Burns

608-385-5436 [www.townofburnswi.com](http://www.townofburnswi.com)

### Town of Campbell

608-783-0050 [www.townofcampbellwi.gov](http://www.townofcampbellwi.gov)

### Town of Farmington

608-780.3391 [www.townoffarmingtonlax.org](http://www.townoffarmingtonlax.org)

### Town of Greenfield

608-452-4700 [www.greenfieldlaxwi.gov](http://www.greenfieldlaxwi.gov)

### Town of Hamilton

608-786-4489 [www.townofhamiltonwi.org](http://www.townofhamiltonwi.org)

### Town of Holland

608-526-3354 [www.townofhollandwi.gov](http://www.townofhollandwi.gov)

### Village of Holmen

608-526-4336 [www.holmenwi.gov](http://www.holmenwi.gov)

### Town of Medary

608-781-2275 [www.townofmedary.wi.gov](http://www.townofmedary.wi.gov)

### Town of Onalaska

608-783-4958 [www.townofonalaska.org](http://www.townofonalaska.org)

### Town of Shelby

608-788-1032 [www.townofshelbywi.gov](http://www.townofshelbywi.gov)

### Village of West Salem

608-786-1858 [www.westsalemwi.gov](http://www.westsalemwi.gov)



## Recycling Center Regulations (Residents must purchase decal. Cost \$5.00)

- Owners of nonresidential facilities must participate in an effective recycling program.
- Owners of multiple-family dwellings are required to notify tenants of the Town's recycling program.
- Penalties for failure to follow recycling regulations range from \$10.00 to \$2,000.00.
- Attendants at the Recycling Center have the right to inspect and refuse materials.
- Cash payment should be for the exact amount. If the exact amount is not presented, the item may be refused. Checks should be made payable to the Town of Greenfield.

**Receipts shall be given for all payments received.**

- Do not leave waste outside the gate or throw waste over the fence. Fines will be assessed for violators.
- Only the attendant may operate the compactor.
- If you have questions or concerns, direct them to one of the following:

	<b>Area Code</b>
<b>Chairman Kevin Timm</b>	<b>608-792-4862</b>
<b>Supervisor 1 Chad Morris</b>	<b>608-317-7691</b>
<b>Supervisor 2 Daren Schieldt</b>	<b>608-780-6803</b>
<b>Recycling Center Manager</b>	
<b>Tom Ludwigson</b>	<b>608-792-9563</b>
<b>Treasurer Danny Kjos</b>	<b>608-485-3131</b>
<b>Town Clerk Jill Murphy</b>	<b>608-452-4700</b>

### Location

W2870 Kreibich Coulee Road.

### Days & Hours (also see calendar opposite)

<b>Summer Hours</b> (April 1–October 31)	<b>Winter Hours</b> (November 1–March 31)
Tuesdays 4pm–7pm	Tuesdays 2pm–5pm
Saturdays 8am–1pm	Saturdays 8am–1pm

**The Recycling Center is for the use of Town of Greenfield residents ONLY—not relatives or friends from outside the township.**

**NOTE: Fees may be subject to change if fees paid by Town of Greenfield increase.**

### Fluorescent Lights (No compact fluorescents)

Fluorescent lamps and lightbulbs must be separated from other items. The fee for fluorescent bulbs 4 feet or over is \$5.00 (fee may increase for 2024). A collection box is located at the Recycling Center. **Fees vary depending on style.**

### Tires

Waste tires may be brought to the Recycling Center. Except where noted, add \$5.00 for tires on rims. Fees:

<b>Car tires</b>	\$15.00 each
<b>Truck tires</b> (pickup size)	\$15.00 each
<b>Truck tires</b> (large)	\$20.00 each
<b>Bicycle tires</b>	\$2.00 each
<b>Bicycle tires on rims</b>	\$4.00 each

### Waste Oil and Antifreeze

Waste oil and antifreeze from residential units may be taken to the Recycling Center, where containers are available for it. **Do not mix oil with antifreeze or gasoline.**

### Lead Acid Batteries

Lead acid batteries are collected at the Recycling Center.

### General Household Trash

Place in designated front load containers. The materials are burned at Xcel Energy to produce electricity.

### Clothing

Although clothing may be placed in the designated front load containers, it is preferable to take it to the Salvation Army, Goodwill, or another thrift shop.

### Paint Cans

Cans containing dried paint may be put in the open-top bin only.

### Scrap Metal

Scrap metal and iron must be separated from items that go to the County Landfill and placed in scrap metal container.

### Yard Waste

Yard waste and compost materials may be brought to the Recycling Center, where an area is available for collection. You are encouraged to compost your own leaves and yard waste.

### Major Appliances

Major appliances may be brought to the Recycling Center from March through November for a fee of \$25.00 for each appliance. Gas refrigerators have a \$50.00 fee. (See box at right for more information.) No food left in appliances.

**Major appliances are not collected in Nov., Dec., Jan., or Feb.**

### E-Waste

We accept electronics (computers, etc.). Fees:

<b>TVs/monitors</b>	\$30.00 each
<b>Computers</b>	\$25.00 each
<b>VCRs, printers, DVD players, stereo amps, etc.</b>	\$10.00 each

You may also take e-waste to the county's Household Hazardous Materials Site. See outside of brochure for information.

### Other Fee Items

<b>Mattress/Box Springs</b>	\$25.00/per piece
<b>Lawn mowers</b>	\$10.00
<b>Riding lawn mowers</b>	\$20.00
<b>Construction site waste</b>	\$25.00/pickup load
	\$50.00/large truckload
<b>Recliners</b>	\$10.00
<b>Couches</b>	\$20.00

### Landfill Items

Materials unacceptable by Xcel Energy for burning may be brought to the Recycling Center for transport to the County Landfill. Examples are:

shingles	furniture	window glass
dishes	mirrors	miscellaneous debris

### Burning



- **Burn permits:** contact the Town Chairman or one of the Supervisors for a burn permit. Permits may be canceled or prohibited by the Fire Chief or Town Chairman if risk of wildfire is significant. No burn permits are issued for the St. Joseph Sanitary District.



- **What you can burn:** Only dry leaves, dry plant clippings, and dry brush may be burned, and you must have a permit in hand when burning. However, the Town recommends composting these materials yourself or taking them to the Recycling Center (see **Yard Waste** above).

- **Campfire rings:** The fire must be contained in a manufactured freestanding fire pit, ring, or pit placed at a safe distance from any structure or combustibles. Fire pits dug into the ground should be lined on the outside with gravel, brick, concrete, or rock to prevent the spread of flames across the ground.

## Appliance Disposal

**\$25.00 per appliance**

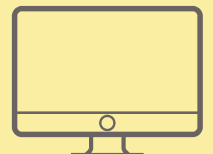
Major appliances are defined as:

- Refrigerators  
*Gas refrigerator \$50.00 fee*
- Stoves
- Ovens
- Freezers
- Dishwashers
- Clothes washers and dryers
- Dehumidifiers
- Air conditioners
- Furnaces
- Boilers
- Water heaters
- Microwaves



**Pay at site—\$25.00 per item.**

Computers, televisions, and other electronic devices are accepted for a fee (see Electronics at left). They may also be taken to La Crosse County's Household Hazardous Materials site—see outside of this brochure.



### Contact Information

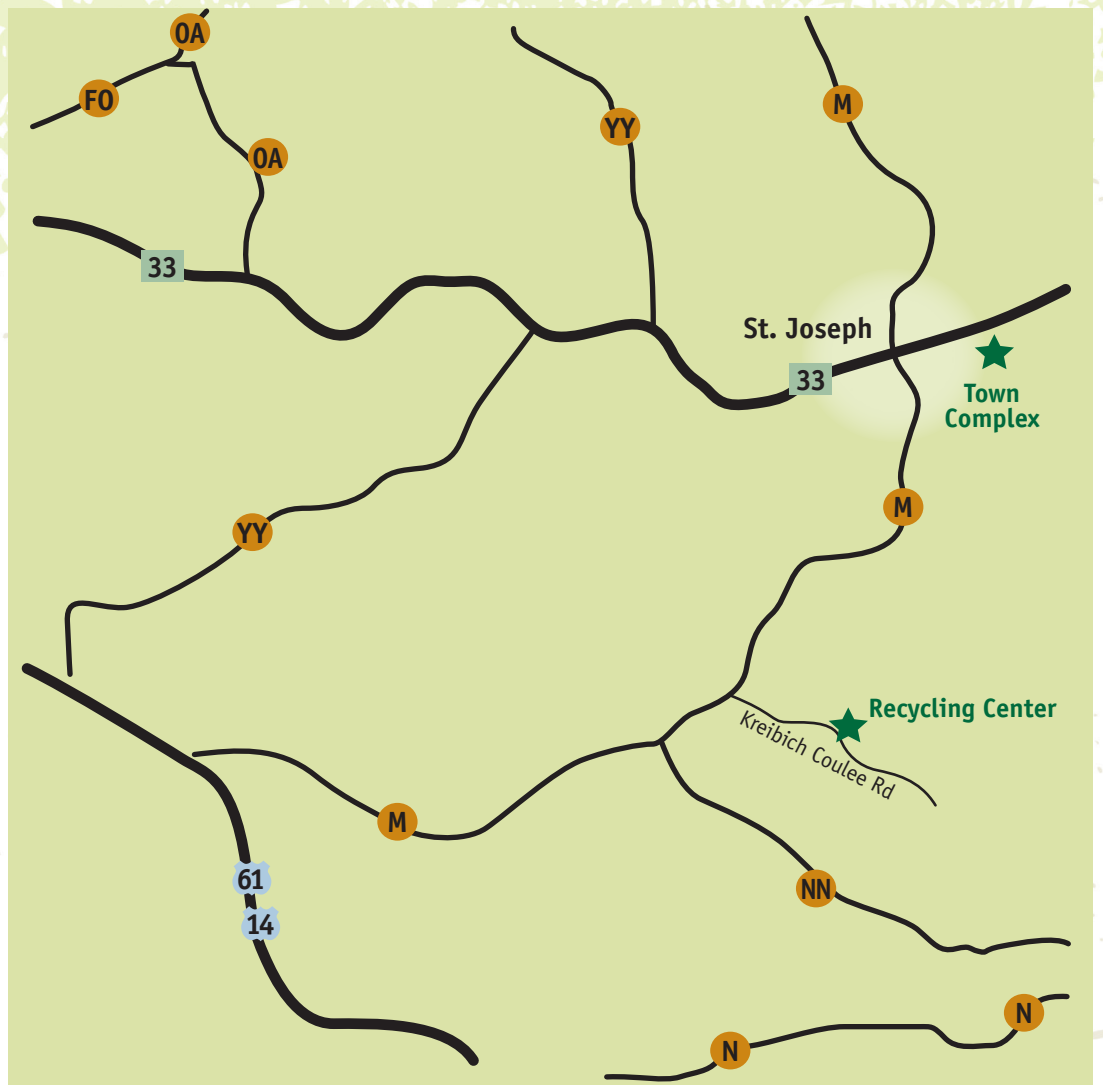
**Greenfield Town Complex**  
N1800 Town Hall Road  
Office . . . 608-452-4700

**La Crosse County Landfill and Household Hazardous Materials Facility (HHM)**  
3200 Berlin Dr. • La Crosse  
Phone: 608-785-9572

**You will receive a brochure at the beginning of each year, so please keep this brochure!**  
**If you misplace it, please call 608-452-4700 for a new one.**

Please visit our website:  
[www.greenfieldlaxwi.gov](http://www.greenfieldlaxwi.gov)





**Recycling Center is monitored 24/7 by cameras for safety and security.**

**The Recycling Center is for use only when an attendant is on the property. Entering the center when closed is trespassing. Violators will be fined.**

## Recycling Center Schedule

W2870 Kreibich Coulee Road

**Summer Hours**  
(April 1–October 31)

Tuesdays 4pm–7pm  
Saturdays 8am–1pm

**Winter Hours**

(November 1–March 31)  
Tuesdays 2pm–5pm  
Saturdays 8am–1pm

JANUARY 2025							FEBRUARY 2025							MARCH 2025							APRIL 2025						
S	M	T	W	T	F	S	S	M	T	W	T	F	S	S	M	T	W	T	F	S	S	M	T	W	T	F	S
			1	2	3	4						1							1			1	2	3	4	5	
5	6	7	8	9	10	11	2	3	4	5	6	7	8	2	3	4	5	6	7	8	6	7	8	9	10	11	12
12	13	14	15	16	17	18	9	10	11	12	13	14	15	9	10	11	12	13	14	15	13	14	15	16	17	18	19
19	20	21	22	23	24	25	16	17	18	19	20	21	22	16	17	18	19	20	21	22	20	21	22	23	24	25	26
26	27	28	29	30	31		23	24	25	26	27	28		23	24	25	26	27	28	29	27	28	29	30			
														30	31												
MAY 2025							JUNE 2025							JULY 2025							AUGUST 2025						
S	M	T	W	T	F	S	S	M	T	W	T	F	S	S	M	T	W	T	F	S	S	M	T	W	T	F	S
				1	2	3	1	2	3	4	5	6	7			1	2	3	4	5						1	2
4	5	6	7	8	9	10	8	9	10	11	12	13	14	6	7	8	9	10	11	12	3	4	5	6	7	8	9
11	12	13	14	15	16	17	15	16	17	18	19	20	21	13	14	15	16	17	18	19	10	11	12	13	14	15	16
18	19	20	21	22	23	24	22	23	24	25	26	27	28	20	21	22	23	24	25	26	17	18	19	20	21	22	23
25	26	27	28	29	30	31	29	30						27	28	29	30	31			24	25	26	27	28	29	30
																					31						
SEPTEMBER 2025							OCTOBER 2025							NOVEMBER 2025							DECEMBER 2025						
S	M	T	W	T	F	S	S	M	T	W	T	F	S	S	M	T	W	T	F	S	S	M	T	W	T	F	S
	1	2	3	4	5	6				1	2	3	4							1		1	2	3	4	5	6
7	8	9	10	11	12	13	5	6	7	8	9	10	11	2	3	4	5	6	7	8	7	8	9	10	11	12	13
14	15	16	17	18	19	20	12	13	14	15	16	17	18	9	10	11	12	13	14	15	14	15	16	17	18	19	20
21	22	23	24	25	26	27	19	20	21	22	23	24	25	16	17	18	19	20	21	22	21	22	23	24	25	26	27
28	29	30					26	27	28	29	30	31		23	24	25	26	27	28	29	28	29	30	31			
														30													

Center Dates:   Holidays (Center not open)

## How to Prepare Recyclables

### GLASS: Jars and bottles only!

SEE NON-ACCEPTABLE MATERIALS BELOW

• PLEASE RINSE & CLEAN



### TIN & ALUMINUM

#### Bottles and Cans:

Pots & pans, empty paint & aerosol cans, aluminum foil, or steel cans

- NO chemicals, scrap metal, or vehicle parts, electronics
- Empty, rinse clean. Ends of cans can stay attached.

### PLASTIC:

Accepted plastics: (bottle form only) #1 #2

#5 food containers (yogurt, cottage cheese, etc.).

DO NOT recycle plastic bags, or to-go food containers (clam shell)

• PLEASE RINSE & CLEAN



### FOOD & BEVERAGE

#### CARTONS:

Milk, juice, broth, soup, and other

- Drain liquid.
- Beverage Paper cups (no lids or straws)

• PLEASE RINSE & CLEAN



### WIRES:

Christmas lights, extension cords and power cords



**NOTE:**

**Paper and Cardboard:** Newspapers, magazines, cereal, soda and beer boxes, paperback books, phone books, paper bags, mail/junk mail. Cardboard boxes must be broken down. Place in cardboard compactor.



**Non-Acceptable Materials for Recycling** - Plastic bags, kitchen garbage bags, photographs, **STYROFOAM (SEE COUNTY SECTION OF FLYER)**, regular trash, yard waste, specialty bulbs (small incandescent/LED can go in trash), dishes, ceramic, mirrors, wood or demolition materials, computer/larger electronics, large carpet rolls, full aerosol cans and wet paint containers, (empties can go in regular trash). Car batteries accepted separately.

**NOTE:**

For More Information Visit [www.hilltopperrefuse.com](http://www.hilltopperrefuse.com)





# THE 2025 La Crosse County • WI Recycler

For answers to questions, call  
La Crosse County HHM program, 608-785-9999  
or visit our Website: [www.lacrossecounty.org/solidwaste/hhm](http://www.lacrossecounty.org/solidwaste/hhm)

## Household Hazardous Materials Facility (HHM)

Free for La Crosse County, WI residential users (unless otherwise noted below)  
Houston County, MN and surrounding counties (Fees apply to all acceptable items)

### Acceptable Materials

- Automotive fluids
- Batteries (rechargeable, lead acid, lithium)
- Cell phones and digital cameras
- Cleaning products
- Computers (desktops, laptops, tablets)
- Computer peripherals (fax machines, hard drives, keyboards, mice, printers, scanners, speakers)
- Fluorescent light bulbs
- Lawn and garden chemicals
- Medications (non-controlled only)
- Mercury-containing devices (barometers, thermometers, thermostats, etc.)
- Microwaves and small Freon appliances **Fees Apply**
- Paints, stains, varnish and solvents
- Pool chemicals
- Propane cylinders (20# and under)
- Sharps and needles
- Smoke detectors
- TVs and computer monitors **Fees Apply**
- Vape pens/E-cigarettes
- Video devices (cable and satellite receivers, DVD players, gaming consoles, VCRs, etc.)
- Water filters (Point of Contact)

### Non-Acceptable Materials

- Compressed gas cylinders (other than propane)
- Controlled substance medications
- Explosives (inc. black powder, fireworks, military munitions, and flares)
- Shock sensitive materials (picric acid, etc.)
- Radioactive materials

### SAVE YOURSELF A TRIP!

These items can and should go into your regular curbside trash or recycling:

- Alkaline batteries (trash)
- Dried out paint (trash)
- Empty paint and aerosol cans (recycle)
- Fertilizer without pesticide (trash)
- Ice melt and rock salt (trash)
- Incandescent light bulbs (trash)



## Preparation & Transportation

### Residential Drop-Off Hours

**Monday – Friday (year-round): 8:00 a.m. – 4:00 p.m.**  
**1st and 3rd Saturdays (April – October): 9:00 a.m. – Noon**

*Businesses and organizations by appointment only.*

*Fees apply to all items for residents who live outside of La Crosse County.*

### FREE PRODUCT REUSE ROOM!

Over 80,000 pounds of useable household products are sorted and made available to the public in our Reuse Room annually. All items are free, but donations are appreciated. The Reuse Room is open Monday – Friday from 8 AM to 4 PM. The Reuse Room is located on the east side of the landfill office building, directly adjacent to the HHM Facility.



3202 Berlin Drive • La Crosse, WI 54601

### Safe Transportation of Hazardous Materials

1. Never mix chemicals.
2. Bring items in original containers or clearly mark contents. Tell facility technician if you are unsure what is in a container.
3. Tighten all covers and lids.
4. If a container is leaking, pack it separately in a leak-proof pail or tub.
5. Avoid spills. Place waste containers upright and place securely in the trunk or back of a truck or van. Do not transport waste containers in vehicle passenger areas.
6. Gasoline should be transported in a designated red safety container.
7. Motor oil should be transported in a durable and leak-proof container labeled with the words "Used Oil."
8. Tape the terminal ends of batteries with clear tape to prevent arcing. Do not co-mingle batteries with chemicals.
9. Transport fluorescent bulbs securely to avoid breakage. Do not tape bulbs together.
10. Upon arrival, pull under the HHM canopy and remain in your vehicle with the engine shut off.

### Sharps & Needles



- Needles, syringes, auto-injectors (EpiPens) and lancets must be transported in sealed, puncture-resistant containers.
- Container options include a standard red sharps container or a thick plastic laundry detergent bottle with screw on cap. All containers must be labeled with the word "SHARPS."
- Additional sharps collection sites can be found on the Alliance to HEAL website.
- For after-hours service, a red sharps drop box is located on Berlin Drive at the La Crosse County Solid Waste Department entrance. This drop box accepts single-use needles as well as small sharps containers. (see map above)

## Use By Businesses & Organizations

The La Crosse County HHM Program is available to assist small businesses and organizations with their hazardous material disposal needs. For more information, call us at (608) 785-9999 or visit our website to download a VSQG qualification packet.

[www.lacrossecounty.org/solidwaste/hhm](http://www.lacrossecounty.org/solidwaste/hhm)